



KENTON COUNTY, KENTUCKY EMERGENCY OPERATIONS PLAN LONG-TERM RECOVERY MITIGATION, AND DAMAGE ASSESSMENT ESF-14

Coordinates and organizes long-term recovery and mitigation resources in preparing for, responding to and recovering from emergency/disaster incidents which impact the citizens of Kenton County.

ESF Coordinator:

Primary:

Northern Kentucky Area Planning Commission,

Alternates:

Northern Kentucky Area Development District

Primary Agency:

Kenton County Emergency Management
Kenton County Judge Executive and Commissioners
Mayor of the Cities of Crescent Springs/Villa Hills
Mayor of Edgewood
Mayor of Elsmere
Mayor of Erlanger
Mayor of Fort Mitchell
Mayor of Fort Wright
Mayor of Independence
Mayor of Lakeside Park
Mayor of Ludlow
Mayor of Park Hills
Mayor of Ryland Heights
Mayor of Taylor Mill
Kenton County Property Valuation

Support Agencies:



KENTON COUNTY EMERGENCY SUPPORT FUNCTION

Kenton County Fiscal Court
Kenton County Sheriff's Office
Kenton County Emergency Management Agency
Kenton County Road Department
Kenton County EMS
Kenton County Animal Control
Kenton County Detention Center
Kenton County Parks and Recreation Department
Bromley Fire Department
Covington Fire Department
Crescent Springs/Villa Hills Fire Department
Edgewood Fire Department
Elsmere Fire Department
Erlanger Fire Department
Fort Mitchell Fire Department
Fort Wright Fire Department
Independence Fire Department
Kenton Fire Department
Ludlow Fire Department
Park Hills Fire Department
Ryland Heights Fire Department
Taylor Mill Fire Department
Kenton County Fire Chiefs Association.

Other Local Agencies:

Mayor of Covington and Covington City Council members
Covington Police Department
Covington Code Enforcement
City of Covington School Board
Kenton County Public Schools
Northern Kentucky Independent Health District,
Edgewood Police Department
Elsmere Police Department
Erlanger Police Department
Fort Wright Police Department
Independence Police Department
Kenton County Police Department
Kenton County Sheriff's Department
Lakeside Park Police Department
Ludlow Police Department
Park Hills Police Department
Taylor Mill Police Department



KENTON COUNTY EMERGENCY SUPPORT FUNCTION

Villa Hills Police Department
Erlanger Dispatch Center
Kenton County Dispatch Center
Kenton County School Board
Kenton County School Resource Officer
Kenton County Jailer
American Red Cross (Cincinnati branch)
Cincinnati Bell
Kenton County Department of Public Works
Cities of Covington
Crestview Hills
Crescent Springs
Elsmere
Erlanger
Fort Mitchell
Fort Wright
Independence
Taylor Mill
Park Hills
Salvation Army
Villa Hills Departments of Public Works,

Regional Support/Resources

Boone County Dispatch
Campbell County Dispatch

State Agencies

Kentucky Division of Emergency Management

Federal Agencies

Federal Emergency Management Agencies

(Not all agencies are listed under these sections, as it would vary and be difficult to include all agencies that could be affected by the impact of a disaster. This ESF will expand/collapse as needed during an incident.)

Introduction

The Long-Term Recovery and Mitigation Emergency Support Function (ESF-14):

- identifies and organizes the resources (human, technical, equipment, facility, materials and/or supplies) available to Kenton County, the City of Kenton Vale, and the City of Simpsonville to address and support long-term recovery and mitigation needs in the event of either a natural or man-made disaster or emergency situation;



KENTON COUNTY EMERGENCY SUPPORT FUNCTION

- identifies the responsibilities of organizations charged with providing long-term recovery and mitigation in the case of a disaster or emergency situation;
- is established to assure the provision of long-term recovery and mitigation support to Kenton County, the City of Covington, the City of Bromley, the City of Crescent Springs/Villa Hills, the City of Edgewood, the City of Elsmere, the City of Erlanger, the City of Fort Mitchell, the City of Fort Wright, the City of Independence, the City of Lakeside Park, the City of Ludlow, the City of Park Hills, the Fire District, the City of Ryland Heights and the City of Taylor Mill and private-sector response before, during and after an incident/event;
- Provides personnel and resources to support prevention, preparedness, protection, response, recovery and mitigation in support of the primary emergency management objectives of long-term recovery and mitigation in emergency and disaster situations.

Mission

The mission of the Long-Term Recovery and Mitigation Emergency Support Function is to coordinate and organize long-term recovery and mitigation resources in preparing for, responding to and recovering from emergency/disaster incidents which impact the citizens of Kenton County.

Scope

The scope of this ESF includes:

- assessing long-term recovery and mitigation system damage and determining the required resources to restore such long-term recovery and mitigation systems;
- coordinating with ESF-14/Long-Term Recovery and Mitigation support agencies for assistance in helping long-term recovery and mitigation suppliers obtain information, equipment, specialized labor, fuel and transportation to repair or restore energy systems;
- coordinating information with local, state, and federal officials and suppliers about available long-term recovery and mitigation supply recovery assistance;
- providing technical assistance concerning long-term recovery and mitigation systems.

ESF-14/Long-Term Recovery and Mitigation is a functional annex to the Kenton County Kentucky Emergency Operations Plan and, to the extent possible, information contained in other sections of the EOP will not be repeated in this ESF annex. Many of the agencies involved in ESF-14/Long-Term Recovery and Mitigation activities have existing emergency plans and procedures which this ESF Annex is designed to complement and support. This Emergency Support Function applies to all agencies with assigned long-term recovery and mitigation emergency responsibilities as described in the Kenton County Kentucky Emergency Operations Plan.



KENTON COUNTY EMERGENCY SUPPORT FUNCTION

Situations and Assumptions

Some of the situations and assumptions involved in planning ESF-14 planning include but are not limited to the following:

- recovery from an incident involves actions and resources from the jurisdictions within Kenton County to return the situation to normal, or as close to normal, conditions as possible;
- long-term recovery is the community's effort to regain normal functions, like commerce, employment, and use of structures like buildings, bridges and roadways.
- mitigation can be a part of a recovery strategy, rebuilding in a way that reduces or eliminates the impact from a reoccurrence of the same type of incident, such as changes in building and zoning codes that prohibit construction on flood plains;
- if a catastrophic incident strikes Kenton County, affected jurisdictions shall require assistance and support in recovering from the damage and destruction caused by the incident with agencies of Kenton County, the City of Covington, the City of Bromley, the City of Crescent Springs/Villa Hills, the City of Lakeside Park, the City of Edgewood, the City of Elsmere, the City of Erlanger, the City of Fort Mitchell, the City of Fort Wright, the City of Independence, the City of Ludlow, the City of Park Hills, the Fire District, the City of Ryland Heights and the City of Taylor Mill governments, along with private relief agencies, providing emergency operations support.
- under certain situations the state shall provide support to recovery operations in restoring public property, critical services, and where applicable, assistance in the restoration of private property;
- damage assessment teams shall be required to collect damage information following an incident which provides the basis for further action by the Chief Elected Officials of Kenton County, the City of Covington, the City of Bromley, the City of Crescent Springs/Villa Hills, the City of Edgewood, the City of Elsmere, the City of Erlanger, the City of Fort Mitchell, the City of Fort Wright, the City of Independence, the City of Lakeside Park, the City of Ludlow, the City of Park Hills, the Fire District, the City of Ryland Heights and the City of Taylor Mill governments;
- in most cases, recovery begins as damage is identified, assessed and classified as being in either the private or public sector;
- the extent of damages in dollars will determine what, if any, federal or state assistance may be available during the recovery phase.

Concept of Operations

The Kenton County Emergency Operations Center (EOC) serves as the central location for interagency coordination and executive decision-making, including all activities



KENTON COUNTY EMERGENCY SUPPORT FUNCTION

associated with ESF-14/Long-Term Recovery and Mitigation during a disaster/emergency event. The ESF-14 Primary Agencies work with the EOC management team to ensure necessary long-term recovery and mitigation tasks are accomplished. The Support and Partnering Agencies provide resources and personnel to assist in accomplishing ESF-14 activities as required by the size and demands of the event. As calls are received requesting services and resources during an emergency/disaster situation, they are routed to the ESF-14/Long-Term Recovery and Mitigation desk to determine appropriate action.

General

ESF-14/Long-Term Recovery and Mitigation is organized consistent with the requirements of the National Response Plan, the National Incident Management System and uses the Incident Command System (composed of Planning, Operations, Logistics and Finance/Administration Sections with their standardized Units, Teams, positions, forms and terminology) to manage its emergency/disaster responsibilities. This structure and system supports incident assessment, planning, procurement, deployment and coordination of long-term mitigation and recovery support operations for Kenton County, the City of Covington, the City of Bromley, the City of Crescent Springs/Villa Hills, the City of Lakeside Park, the City of Edgewood, the City of Elsmere, the City of Erlanger, the City of Fort Mitchell, the City of Fort Wright, the City of Independence, the City of Kenton Vale, the City of Ludlow, the City of Park Hills, the City of Ryland Heights and the City of Taylor Mill.

Pursuant to the Incident Command System structure, the Planning, Logistics, Finance/Administration and Operations Section Coordinators and staff at the Emergency Operations Center (EOC) assist the EOC Manager in achieving the overall mission. Sections, Units, Teams, staffing levels, etc. are modular and scalable, depending on the type, size, scope and complexity of the emergency or disaster event.

Procedures, protocols and plans for long-term recovery and mitigation disaster response activities provide guidelines for operations at the Kenton County Emergency Operations Center and in the field.

The Emergency Operations Plan and corresponding Appendices, Incident Annexes, Support Annexes and Standard Operating Guidelines that describe ESF-14/Long-Term Recovery and Mitigation capabilities are based on National Planning Scenarios,

Universal Task List and Target Capabilities and are the basis of these guidelines; periodic training and exercises are conducted to enhance effectiveness;

- long-term recovery and mitigation planning is continuous, beginning well before impact of approaching natural disasters and immediately upon those not forecasted.



KENTON COUNTY EMERGENCY SUPPORT FUNCTION

A large event requiring regional, state and/or interstate mutual aid assistance will require ESF-14/Long-Term Recovery and Mitigation implementation. ESF-14-Long-Term Recovery and Mitigation will coordinate with support agency counterparts to seek and procure, plan, coordinate and direct the use of any required long-term recovery and mitigation assets.

When an event requires a specific type or response mode, long-term recovery and mitigation technical and subject matter expertise may be provided by an appropriate person(s) from a supporting agency with skills relevant to the type of event. The individual will advise and/or direct operations within the context of the Incident Command System structure.

As illustrated in Figure 14-1: *ESF-14/Long-Term Recovery and Mitigation Concept of Operation*, ESF-14 will give priority to five fundamental, interrelated functions:

- use technology and human intelligence to collect, analyze and disseminate information on direct and indirect disaster impacts,
- assess the capabilities of local government, the business community and volunteer agencies to effectively respond to the disaster;
- assess and prioritize the immediate needs of impacted communities, neighborhoods and areas of the county;
- incorporate the analyses into Incident Action Plans that establish operational objectives and identify resource requirements to accomplish these objectives;
- utilize an Incident Action Matrix to establish priorities, assign tasks to agencies and track progress in meeting objectives.

ASSESS IMPACTS

1. ASSESS LOCAL RESPONSE CAPABILITIES
2. PRIORITIZE NEEDS OF IMPACTED AREAS
3. PREPARE AND IMPLEMENT INCIDENT ACTION PLANS (IAP)
4. PREPARE AND IMPLEMENT INCIDENT ACTION MATRIX

ESF-14/LONG-TERM RECOVERY AND MITIGATION CONCEPT OF OPERATIONS

Figure 14-1: *ESF-14 Long-Term Recovery and Mitigation Concept of Operations*

Each long-term recovery and mitigation organization which enters into a mutual aid agreement will furnish a copy of the agreement to the Kenton County Emergency Management Agency.

The Kenton County Emergency Management Agency will maintain up-to-date information of long-term recovery and mitigation services in Kenton County including:

- names of responsible officials (reviewed/updated quarterly),
- ESF-14/Long-Term Recovery and Mitigation staffing directory (reviewed/updated quarterly),



KENTON COUNTY EMERGENCY SUPPORT FUNCTION

- ESF-14/Long-Term Recovery and Mitigation notification lists (reviewed/updated quarterly),
- major long-term recovery and mitigation equipment identified in Resource Typing and readiness status (reviewed/updated annually).

The ESF-14/Long-Term Recovery and Mitigation Emergency Operations Plan plus accompanying Appendices, Annexes and Standard Operating guidelines are maintained by the Kenton County Emergency Management Agency and are reviewed and updated by the long-term recovery and mitigation planning committee with the Kenton County Emergency Management Agency at least annually. Support agencies may develop and maintain their own similar documents for internal use, which must be compatible with and in support of the overall Emergency Operations Plan. All such documents must be compliant with the National Response Plan, National Incident Management System, Incident Command System and the Emergency Operations Plan (EOP) Long-term recovery and mitigation organizations are responsible for training and continuing education of their personnel.

ESF-14/LONG-TERM RECOVERY AND MITIGATION CONCEPT OF OPERATIONS

Figure 14-1: ESF-14 Long-Term Recovery and Mitigation Concept of Operations con't:

The Kenton County Emergency Operations Center uses WebEOC (crisis management software) to supplement disaster management planning and actions. Specifically, all of the applicable Emergency Support Functions, agency based emergency operations centers, and other facilities or functions as appropriate are able to communicate their needs and status through WebEOC. This allows all of the information to be integrated for the specific event and to assess what actions, resources and needs exist.

Notifications

Kenton County E911 Dispatch is the county's 24 hour Warning Point.

When the county or an area of the county has been threatened or impacted by an emergency or disaster event, Kenton County E911 Dispatch will notify the Kenton County Emergency Management Agency Director who in turn will notify the State Emergency Operations Center Duty Officer. The state Emergency Operations Center notifies applicable state agencies including the Regional Response Manager of KyEM Region 6.

ESF-14/Long-Term Recovery and Mitigation will be activated or placed on standby upon notification by the Kenton County Emergency Management Agency. Upon instructions to activate this Emergency Support Function, the ESF-14 Coordinator and Support Agencies will implement their procedures to notify and mobilize all personnel, facilities and physical resources potentially needed, based on the emergency circumstance.



KENTON COUNTY EMERGENCY SUPPORT FUNCTION

Direction and Control

Kenton County Emergency Management, Kenton County Judge Executive and Commissioners, Mayor of the Cities of Crescent Springs/Villa Hills, Mayor of Lakeside Park, Mayor of Edgewood, Mayor of Elsmere, Mayor of Erlanger, Mayor of Fort Mitchell, Mayor of Fort Wright, Mayor of Independence, Mayor of Ludlow, Mayor of Park Hills, , Mayor of Ryland Heights and the Mayor of Taylor Mill, Kenton County Property Valuation are the lead agencies for ESF-14 and will manage the emergency activities of ESF-14/Long-Term Recovery and Mitigation. Long-Term Recovery and Mitigation operates from the Kenton County Emergency Operations Center (EOC) on a 24 hour/7 days a week schedule to help maintain the flow of long-term recovery and mitigation services.

The Kenton County Emergency Management Agency functions as the official disaster organization for preparedness, mitigation, response and recovery within Kenton County and serves as the focal point for ESF-14 activities. It is responsible for ensuring that all appropriate program departments, support agencies, other Emergency Support Functions and private voluntary agencies have knowledge about the system and ESF-14 expectations.

The ESF-14 system operates at two levels – the Emergency Operations Center and field operations.

All management decisions regarding county and/or regional resource allocation are made at the Emergency Operations Center by the ESF-14 Coordinator during emergency activations. In accordance with a mission assignment from ESF-14 and further mission tasking by a local primary agency, each support organization assisting in an ESF-14 assignment will retain administrative control over its own resources and personnel but will be under the operational control of ESF-14. Delegation of mission operational control may be delegated to a management Support Unit, Multi-Agency Coordination Team or a local entity.

Organization

FEDERAL ASSETS
INTER-STATE MUTUAL AID AGREEMENTS
INTRA-STATE MUTUAL AID AGREEMENTS
MUTUAL AID AGREEMENTS

Requests for Emergency Assistance Flow Upwards from the Lowest Level

COVINGTON CITY RESOURCE
BROMLEY CITY RESOURCE
CRESCENT SPRINGS CITY RESOURCE



KENTON COUNTY EMERGENCY SUPPORT FUNCTION

EDGEWOOD CITY RESOURCE
ELSMERE CITY RESOURCE
ERLANGER CITY RESOURCE
FORT MITCHELL CITY RESOURCE
FORT WRIGHT CITY RESOURCE
INDEPENDENCE CITY RESOURCE
KENTON COUNTY RESOURCE
LAKESIDE PARK CITY RESOURCE

Requests for Emergency Assistance Flow Upwards from the Lowest Level

LUDLOW CITY RESOURCE
PARK HILLS CITY RESOURCE
RYLAND HEIGHTS CITY RESOURCE

Requests for Emergency Assistance Flow Upwards from the Lowest Level con't:

TAYLOR MILL CITY RESOURCE
VILLA HILLS CITY RESOURCE
KENTON COUNTY RESOURCE

ESF-14 COORDINATOR

KENTON COUNTY EMERGENCY OPERATIONS CENTER
STATE EMERGENCY OPERATIONS CENTER

Figure 14-2: Progressive Requests for Emergency/Disaster Resources

Response to an emergency/disaster event in Kenton County is progressive as demonstrated in Figure 14- 2: *Progressive Requests for Emergency/Disaster Resources*. The initial response to an emergency/disaster situation is met by the use of the long-term recovery and mitigation resources available at the local level. Kenton County Fiscal Court, City of Covington, the City of Bromley, the City of Crescent Springs/Villa Hills, the City of Lakeside Park, the City of Edgewood, the City of Elsmere, the City of Erlanger, the City of Fort Mitchell, the City of Fort Wright, the City of Independence, the City of Kenton Vale, the City of Ludlow, the City of Park Hills, the City of Ryland Heights and the City of Taylor Mill activate available resources. When the long-term recovery and mitigation needs for resources and/or services exceed the capability of what is available in the jurisdictions within Kenton County, established mutual aid agreements with surrounding counties to provide long-term recovery and mitigation, such resources are utilized. When needed long-term recovery and mitigation resources cannot be located through mutual aid agreements, the Kenton County Emergency Operations Center requests resources through the state Emergency



KENTON COUNTY EMERGENCY SUPPORT FUNCTION

Operations Center. The state Emergency Operations Center locates resources through intra- and inter-state mutual aid agreements and federal assets.

County

Kenton County Emergency Management will initiate ESF-14/Long-Term Recovery and Mitigation notification and will request assistance from the primary and support agencies to help staff the ESF-14 position in the Kenton County Emergency Operations Center. In the Incident Command Structure, ESF-14 -Long-Term Recovery and Mitigation is a branch located in the Operations section as shown in Figure 14-3: *Incident Command System Structure: ESF-14–Long-Term Recovery and Mitigation*.

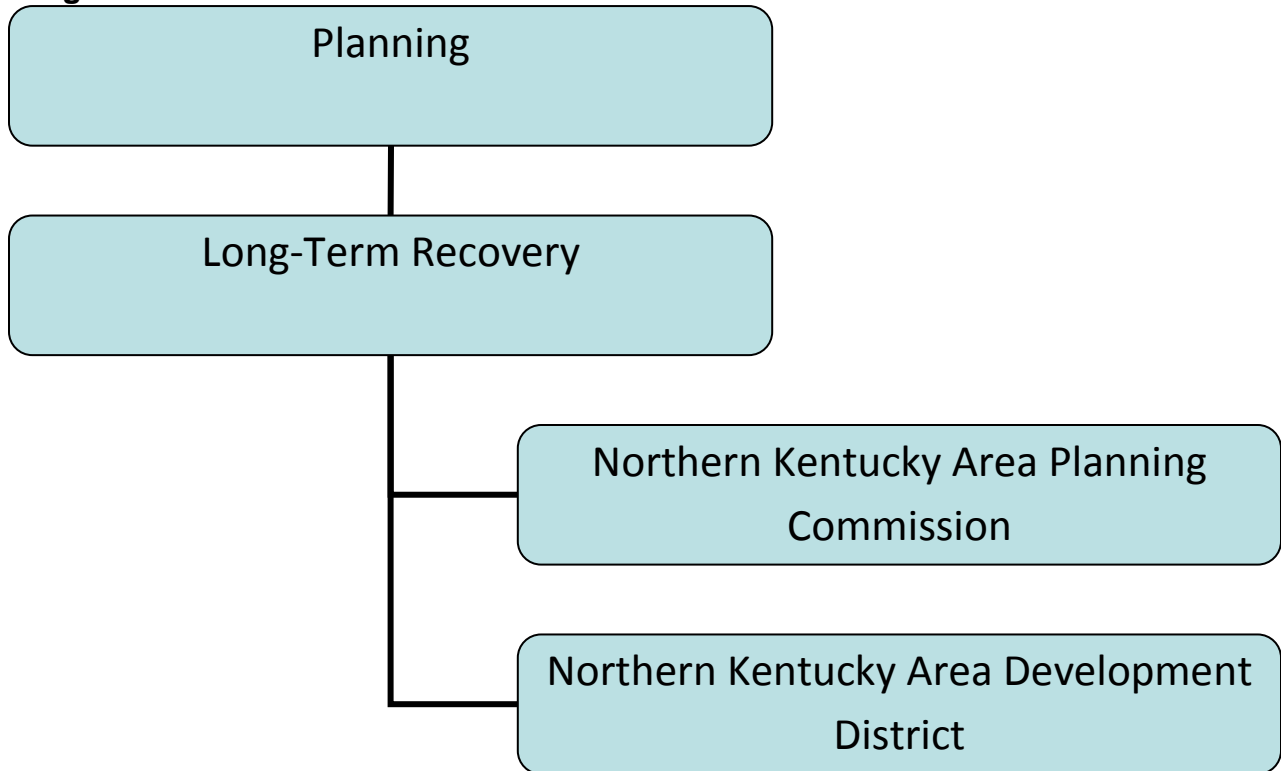
KENTON COUNTY EOC MANAGER
PUBLIC INFORMATION
ESF 15
LIAISON
SAFETY
OPERATIONS
PLANNING
LOGISTICS
FINANCE



KENTON COUNTY EMERGENCY SUPPORT FUNCTION

LONG-TERM RECOVERY AND MITIGATION BRANCH ESF-14

Figure – Incident Command System Structure: ESF-14 – Long-Term Recovery and Mitigation



During an activation of the EOC, support agency staff is integrated with the long-term recovery and mitigation staff to provide support that will allow for an appropriate, coordinated and timely response.

Throughout the response and recovery periods, ESF-14:

- collects, analyzes, and disseminates tactical information on the nature, scope and potential impacts of an incident or major disaster related to long-term recovery and mitigation;
- evaluates and analyzes information regarding long-term recovery and mitigation requests;
- develops and updates assessments of current and anticipated future long-term recovery and mitigation needs and resource requirements,
- implements contingency planning to meet anticipated long-term recovery and mitigation demands or needs;
- incorporates this analysis into Incident Action Plans; and



KENTON COUNTY EMERGENCY SUPPORT FUNCTION

- uses this intelligence to support the Logistics, Operations and other ESFs in their impact assessment and response missions.

Region

When local resources are overwhelmed or depleted, additional long-term recovery and mitigation resources are obtained through established mutual aid agreements Kenton County has with counties in the region. The Long-Term Recovery and Mitigation Branch Director, in consultation with the requesting jurisdiction, contact the agencies with whom mutual agreements are in effect to determine if the requested resources are available.

Additionally, either the KyEM Region 6 Response Manager or the state Emergency Operations Center can be contacted to determine the appropriate state agency serving as the lead agency for long-term recovery and mitigation coordination/support at the state level. That agency can designate a liaison to the Kenton County EOC to assist Emergency Support Function 14 and to the extent capable provide coordinators, assessors and operational personnel in support of the EOC or field activities.

On activation of an emergency operations center in more than one county, the lead agency for long-term recovery and mitigation coordination/support at the state level may support the coordination of the event response with regional resources or request additional resources through the State Emergency Operations Center.

State

During an emergency or disaster event, ESF-14/comparable primary and support agencies at the State Emergency Operations Center report and function under the overall direction of the Kentucky Division of Emergency Management Director.

During the response phase, ESF-14/comparable evaluates and analyzes information regarding long-term recovery and mitigation requests. ESF-14/comparable also develops and updates assessments of the long-term recovery and mitigation situation/status in the impact area and initiate contingency planning to meet anticipated demands and needs.

The Kentucky Division of Emergency Management develops and maintains the overall State Emergency Operations Plan and accompanying Appendices and Standard Operating Guidelines that govern response actions related to emergencies. Support agencies may develop and maintain their own similar documents for internal use, which must be compatible with and in support of the overall Emergency Operations Plan. All such documents will comply with the National Response Plan, the National Incident Management System and the Incident Command System.

Actions

Actions initiated by ESF-14 are grouped into the phases of emergency management: preparation, mitigation, response and recovery. Each phase requires significant



KENTON COUNTY EMERGENCY SUPPORT FUNCTION

cooperation and collaboration between all supporting agencies and the intended recipients of service. ESF-14 encompasses a full range of activities from training to the provision of field services.

ESF-14/Long-Term Recovery and Mitigation also coordinates and may assume direct operational control of the following functional areas:

Preparedness Actions

- review and update disaster procedures as they relate to ESF-14 activities.

Response Actions

- Kenton County, City of Covington, the City of Bromley, the City of Crescent Springs/Villa Hills, the City of Lakeside Park, the City of Edgewood, the City of Elsmere, the City of Erlanger, the City of Fort Mitchell, the City of Fort Wright, the City of Independence, the City of Kenton Vale, the City of Ludlow, the City of Park Hills, the Fire District, the City of Ryland Heights and the City of Taylor Mill governments shall maintain direction and control of disaster response operations;
- state assistance is to supplement the county/local response operations and shall be provided based on identified requirements and priorities.

Recovery Actions

- assess the social and economic consequences in the impacted area and coordinate efforts to address long-term community recovery issues;
- Kenton County and the City governments of the City of Covington, the City of Bromley, the City of Crescent Springs/Villa Hills, the City of Edgewood, the City of Elsmere, the City of Erlanger, the City of Fort Mitchell, the City of Fort Wright, the City of Independence, the City of Lakeside Park, the City of Ludlow, the City of Park Hills, the City of Ryland Heights and the City of Taylor Mill must be prepared to continue recovery operations until all actions have been completed. Recovery operations may continue long after the emergency response workers have left the scene;
- all local agencies applying for federal/state funds must insure that proper documentation and records are maintained throughout recovery operations;
- in a catastrophic incident, state and local governments shall provide assistance in treating the injured, interring the dead and restoring property. Assistance from the federal government shall be provided, depending on the situation and availability of resources;
- recovery procedures required following a disaster will vary greatly and the following plans and procedures may be needed:
 - damage assessments by public and private sectors;
 - reassemble family or work units;
 - life, safety, and health protective measures for impacted citizens;



KENTON COUNTY EMERGENCY SUPPORT FUNCTION

- securing food, water, shelter, clothing, fuels, and transportation;
- record keeping for potential reimbursement;
- recovery of vital records, such as bank statements, licenses, contracts, accounting documents, payroll records;
- access to funds for recovery;
- assistance from state/federal agencies may require completion of additional documents and/or coordination of assistance;

- follow-up assessments will be conducted by state and federal representatives to verify unmet needs;
- repair or replacement of damaged and/or hazardous facilities.

Mitigation Actions

- provide personnel with the appropriate expertise to participate in activities designed to increase the ability to respond and affect long-term recovery and mitigation strategies in Kenton County to reduce the impact of future disasters.

Responsibilities

All tasked agencies will:

- develop applicable standard operating procedures, guidelines and/or checklists which clearly define the role of this emergency support function in the overall functioning of the Kenton County EOC and detail the accomplishment of their assigned functions;
- train staff in the standard operating procedures, guidelines and/or checklists that outline the courses of action to be taken during a pending or actual disaster or emergency situation;
- participate in drills to exercise these procedures and actions on a regular basis;
- participate in honest appraisals of the performance of the long-term recovery and mitigation role and actions after each drill, exercise and actual activation of the Kenton County EOC;
- participate in a continuous quality improvement process that uses the findings of the performance appraisals and the lessons learned to continuously refine the role and actions of this emergency support function in the overall functioning of the Kenton County EOC and incorporate these into clearly written procedures which are shared with all staff and involved agencies;
- deploy a representative to the EOC to assist with emergency management activities;
- provide on-going status reports as requested by the Emergency Management Coordinator;
- document all costs and expenses associated with response and recovery activities taking care to clearly separate disaster-related work from daily work in the event that State and Federal reimbursement becomes available;



KENTON COUNTY EMERGENCY SUPPORT FUNCTION

- maintain up-to-date rosters for notifying personnel and 24-hour EOC staffing capabilities, and provide this information to the Kenton County Emergency Management Agency;
- perform other emergency responsibilities as assigned.

Primary Agencies:

Kenton County Emergency Management, Kenton County Judge Executive and Commissioners, Mayor of the Cities of Crescent Springs/Villa Hills, Mayor of Edgewood, Mayor of Elsmere, Mayor of Erlanger, Mayor of Fort Mitchell, Mayor of Fort Wright, Mayor of Independence,, Mayor of Lakeside Park, Mayor of Ludlow, Mayor of Park Hills, Mayor of Ryland Heights and the Mayor of Taylor Mill, Kenton County Property Valuation

Duties include:

- managing and coordinating spontaneous volunteers in coordination with the EOC;
- coordinating private non-profit recovery efforts;
- coordinating recovery of vital records, such as bank statements, licenses, contracts, accounting documents, payroll records, etc;
- coordinating countywide surveillance of potential problems related to public water supplies, sewage disposal systems, solid waste accumulation and disposal, food storage, disease carrying animals and insects, and natural gas leaks;
- providing EOC support, conduct briefings, direct needs assessments, distribute key information and serve as liaison to the State EOC for resource requests;
- collecting and processing information received from Damage Assessment Teams and predictive models, analyze this information, and share with the Planning section;
- coordinating the development and implementation of the preparedness activities, as outlined in the Plan;
- coordinating with ESF 7 Resource Support to ensure that all available resources are logged and requests for resources are filled;
- ensuring that copies of all news releases and situation reports are transmitted to the State EOC.

Support Agencies:

Support agencies will provide assistance to the Emergency Support Function with:

- performing the above-outlined tasks as requested by the ESF Coordinator;
- services, staff, equipment, and supplies that complement the entire emergency response effort;
- reporting current resources capabilities on a regular basis;
- developing Recovery Plans and Procedures;



KENTON COUNTY EMERGENCY SUPPORT FUNCTION

- ensuring ESF-14 representatives are properly trained and exercised on the plans and procedures relating to their work;
- initiating record keeping of disaster expenses;
- assessing damages;
- assessing capabilities to conduct normal business;

- assessing needs to return to normal business;
- conducting debris clearance;
- re-establishing interrupted utility services;
- conducting short-term repairs needed to support normal operations;
- beginning recovery of Vital and Important Records needed to conduct normal business;
- beginning reconstruction and long-term repairs with available funds;
- managing and coordinating spontaneous volunteers in coordination.

Administration and Support Support

Requests for emergency assistance will be resolved at the lowest level direction and control facility with appropriate response resources capabilities. Unresolved assistance requests will normally flow upward from cities to the county and/or field deployed command posts to responsible representatives in the State Emergency Operations Center, and as required to other states or the federal government for assistance support.

Agreements and Understandings

All agreements and understandings entered into for the purchase, lease, or otherwise use of equipment and services, will be in accordance with the provision of laws and procedures.

Status Reports

The primary agency will maintain status of all outstanding assistance requests and unresolved ESF-14/Long-Term Recovery and Mitigation related issues. This information will be summarized into periodic status reports and submitted in accordance with applicable operating procedures.

Expenditures and Recordkeeping

Each ESF-14/Long-Term Recovery and Mitigation agency is responsible for establishing administrative controls necessary to manage the expenditure of funds and to provide reasonable accountability and justification for federal reimbursement in accordance with the established guidelines. The first source of funds for expenditures by agencies in response to emergency, imminent disaster, or recovery from a catastrophic incident, is to be from funds associated with each local agency.



KENTON COUNTY EMERGENCY SUPPORT FUNCTION

ESF-14/Long-Term Recovery and Mitigation is responsible for managing financial matters specific to ESF-14 activity and related to resources procured/used during an event and forwarding that information to the Finance/Administration Section. However, each local government/agency/department must also track and record its own expenditures to ensure accuracy with any submissions for potential reimbursement. Information will be provided post-event as to application procedures for reimbursement.

The Finance/Administration Section will coordinate with the Logistics Section to ensure that procurements and staff hours are properly documented and processed for potential reimbursement. It will also be responsible for follow-up on all financial issues through coordination with Kenton County Government and other local governments' fiscal and personnel management officials, Kentucky Division of Emergency Management fiscal agents, Federal Emergency Management Agency fiscal agents and directly with vendors as necessary.

Expenditures by other departments for activity not directly related to ESF-14/Long-Term Recovery and Mitigation will be documented by those entities and submitted directly to the Finance/Administration Section as soon as possible.

Critiques

Following the conclusion of any significant emergency, incident or exercise, the primary agency representative will facilitate a critique of the group activities during the emergency/incident/exercise with the ESF-14/Long-Term Recovery and Mitigation agencies, identifying the successes and identifying areas that can be strengthened and enhanced for efficiency in a continuous quality improvement process for the overall performance of the Kenton County Emergency Operations Center.

Statement of Concurrence LONG-TERM RECOVERY AND MITIGATION ESF-14

The signature appearing below indicates the individual has the authority to commit resources of the agency represented and agrees to the functions and tasks prescribed for this ESF.

PRIMARY AGENCIES:

Kenton County Emergency Management, Kenton County Judge Executive and Commissioners, Mayor of the Cities of Crescent Springs/Villa Hills, Mayor of Edgewood, Mayor of Elsmere, Mayor of Erlanger, Mayor of Fort Mitchell, Mayor of Fort Wright, Mayor of Independence, Mayor of Lakeside Park, Mayor of Lakeside Park, Mayor of Park Hills, Mayor of Ryland Heights and the Mayor of Taylor Mill, Kenton County Property Valuation



KENTON COUNTY EMERGENCY SUPPORT FUNCTION

Kenton County Emergency Management (Signature) (Printed Name) (Date)

Kenton County Judge Executive and Commissioners (Signature) (Printed Name) (Date)

Crescent Springs/Villa Hills (Signature) (Printed Name) (Date)

Mayor of Edgewood (Signature) (Printed Name) (Date)

Mayor of Elsmere (Signature) (Printed Name) (Date)

Mayor of Erlanger (Signature) (Printed Name) (Date)

Mayor of Fort Mitchell (Signature) (Printed Name) (Date)

Mayor of Independence (Signature) (Printed Name) (Date)

Mayor of Lakeside Park (Signature) (Printed Name) (Date)

Mayor of Lakeside Park (Signature) (Printed Name) (Date)

Mayor of Park Hills (Signature) (Printed Name) (Date)

Mayor of Ryland Heights (Signature) (Printed Name) (Date)



KENTON COUNTY EMERGENCY SUPPORT FUNCTION

Mayor of Taylor Mill

(Signature) (Printed Name) (Date)

(Signature) (Printed Name) (Date)

SUPPORTING AGENCIES:

Kenton County Fiscal Court

Kenton County Sheriff's Office, Kenton County Emergency Management Agency, Kenton County Road Department, Kenton County EMS, Kenton County Animal Control, Kenton County Detention Center, Kenton County Parks and Recreation Department, Bromley Fire Department, Covington Fire Department, Crescent Springs/Villa Hills Fire Department, Edgewood Fire Department, Elsmere Fire Department, Erlanger Fire Department, Fort Mitchell Fire Department, Fort Wright Fire Department, Independence Fire Department, Kenton Fire Department, Ludlow Fire Department, Park Hills Fire Department, Piner-Fiskburg Fire District, Ryland Heights Fire Department, Taylor Mill Fire Department and the Kenton County Fire Chiefs Association.

City of Covington: Mayor of Covington and Covington City Council members, Covington Police Department, Covington Dispatch, Covington Code Enforcement, City of Covington School Board

Other Local Agencies Kenton County Public Schools, Northern Kentucky Independent Health District Edgewood Police Department, Elsmere Police Department, Erlanger Police Department, Fort Wright Police Department, Independence Police Department, Kenton County Police Department, Kenton County Sheriff's Department, Lakeside Park Police Department, Ludlow Police Department, Park Hills Police Department, Taylor Mill Police Department, Villa Hills Police Department,

Boone County Dispatch, Campbell County Dispatch, Erlanger Dispatch Center, Kenton County Dispatch Center, Kenton County School Board, Kenton County School Resource Officer, Kenton County Jailer,

American Red Cross (Cincinnati branch), Cincinnati Bell, FBI, Kenton County Department of Public Works, Cities of Covington, Crestview Hills, Crescent Springs, Elsmere, Erlanger, Fort Mitchell, Fort Wright, Independence, Taylor Mill, Park Hills, Salvation Army, and Villa Hills Departments of Public Works,

State Agencies Kentucky Division of Emergency Management



KENTON COUNTY EMERGENCY SUPPORT FUNCTION